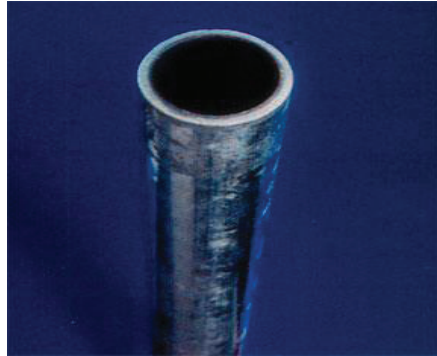
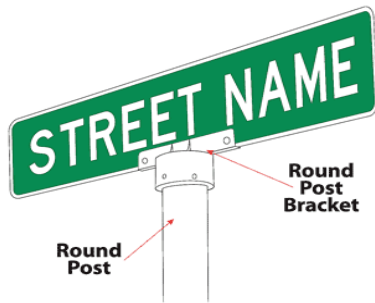
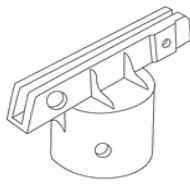


## Round Sign Posts



Most Common Sizes 10' or 12' light gauge .063 wall (shown here thicker) these posts are most commonly used for street named signs but can be used for all signs and are available in custom painted or powder coated colors (powder coat is best finish!)

Round Post Bracket

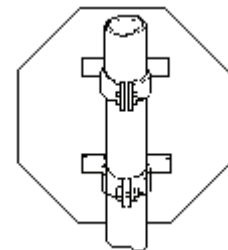


Typical Application



Post Pounder

## Brackets for Round Posts



“IF WE DON’T HAVE IT... IT DOESN’T EXIST”